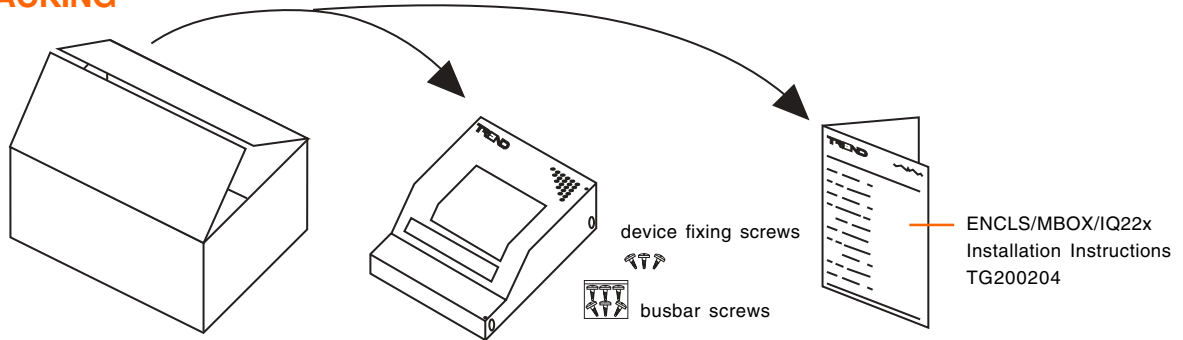


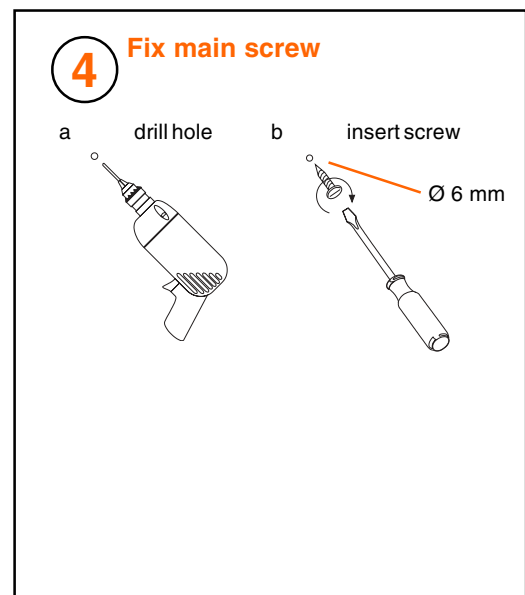
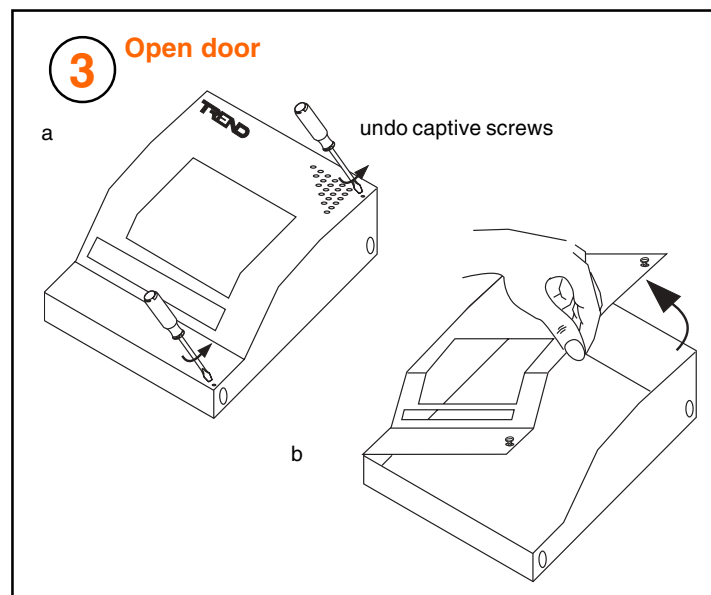
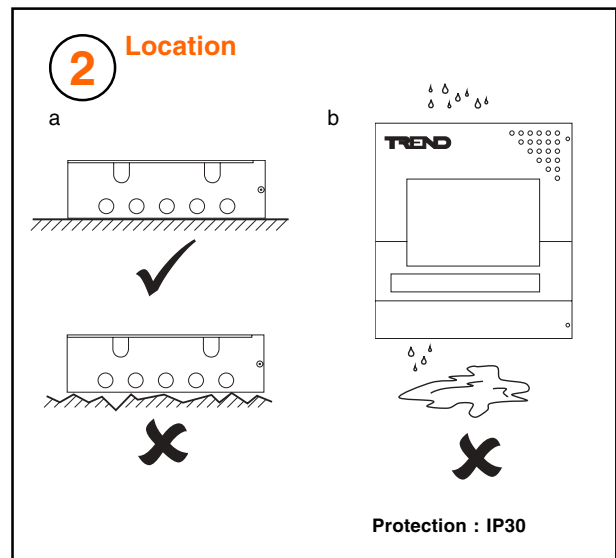
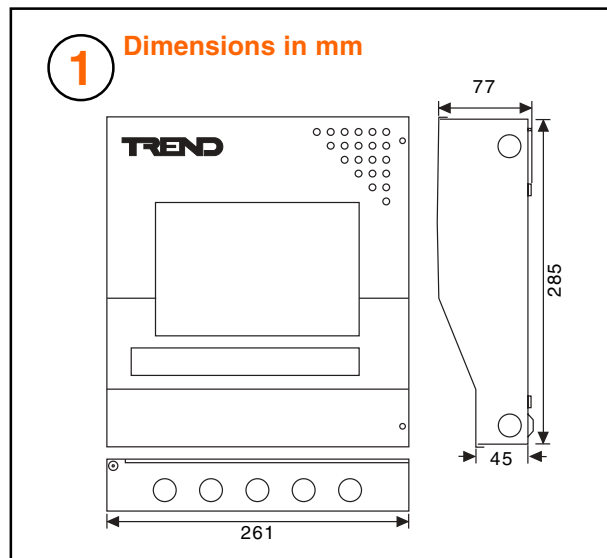
Important: Retain these instructions



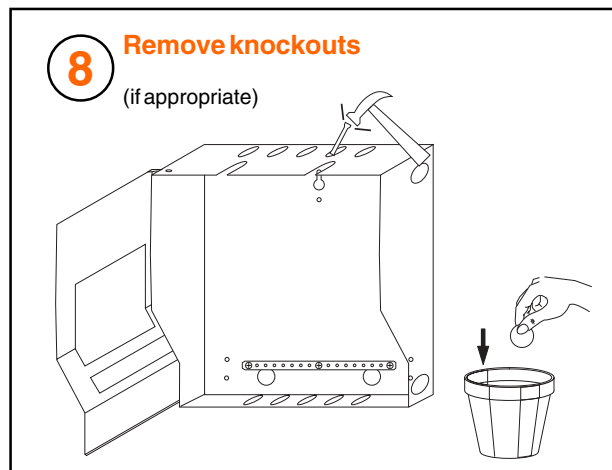
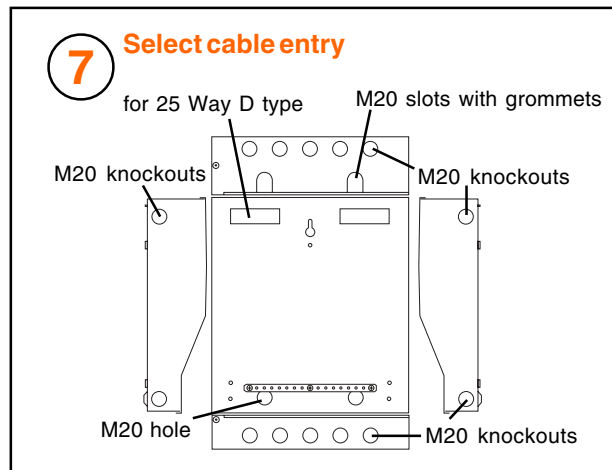
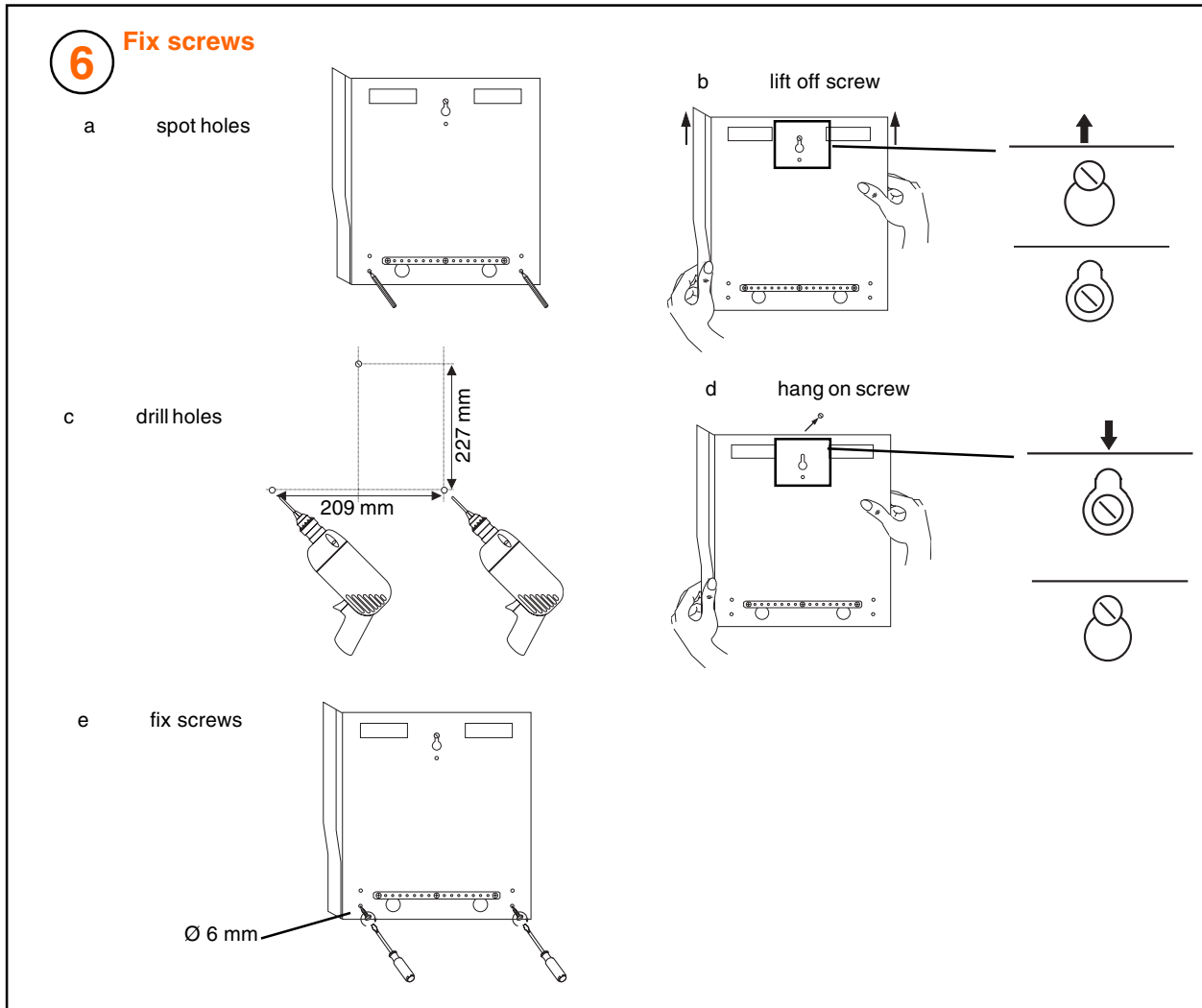
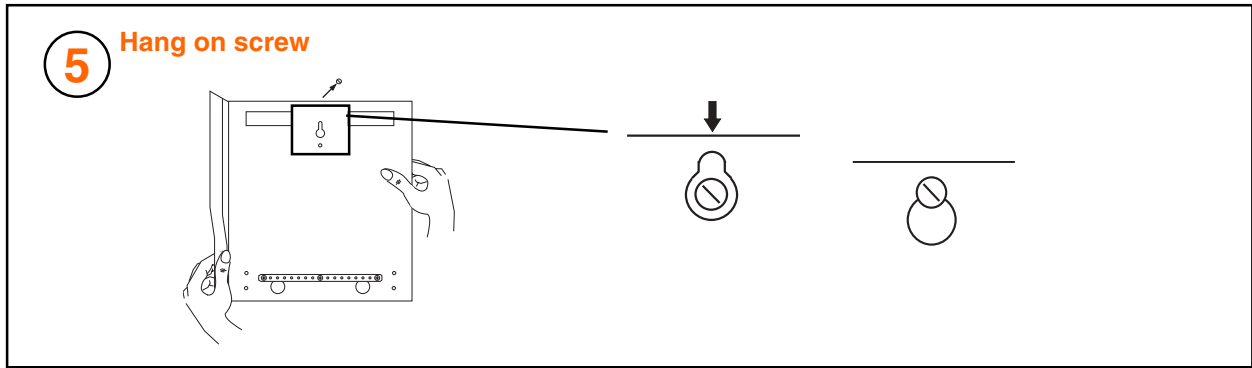
UNPACKING



INSTALLATION



INSTALLATION (continued)



INSTALLATION (continued)

9 Route cables

pierce grommet or use copex glands

10 Terminate screens

11 Install NBOX device

NBOX device
Installation Instructions

12 Earth the box

e.g. 230 Vac version

WARNING: This apparatus must be earthed

